

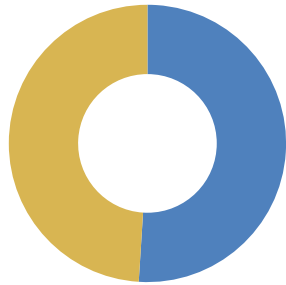


Terminal Puerto Rosario S.A.

Argentina: +50 ports which moves 82% of international trade within 9 provinces.

1.75M TEUS

175 M Tons bulk cargo



Rosario city:

- Population of 1.2 MM. Ranked 3rd
- Hinterland produce 65-70% of total exports

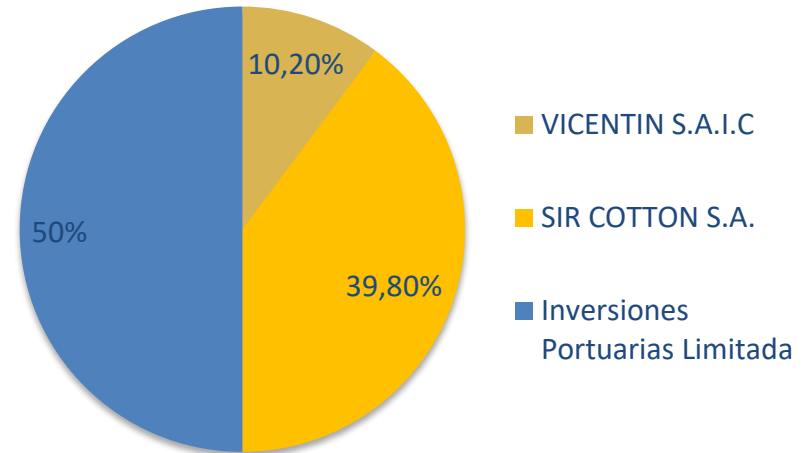
Rosario Port:

- Founded in the first years of XIX century.
- Main port in Argentina for bulk cargo on XX century



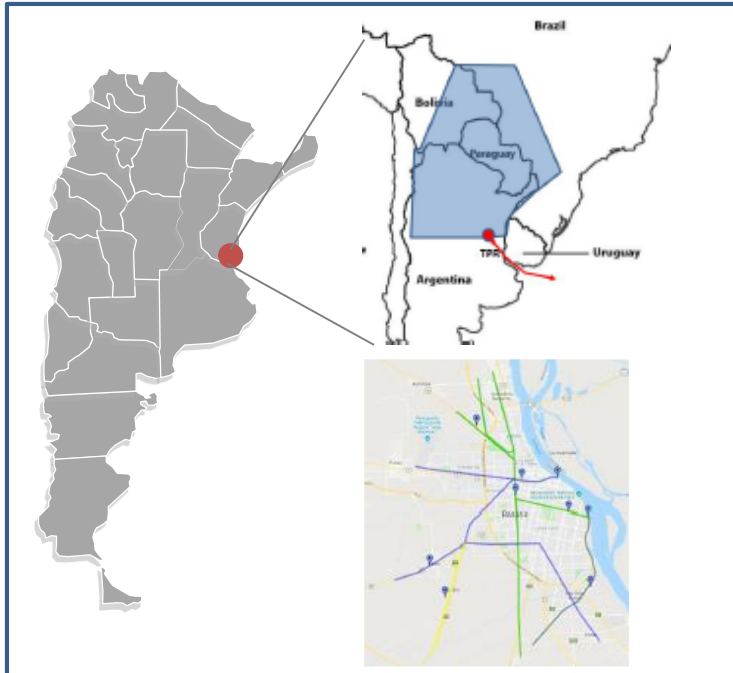


- TPR S.A. is a multipurpose terminal.
- The concession
 - Began: 16-10-2002
 - Length: 30 years
 - Port Authority: ENAPRO
- Current shareholder structure



Terminal Puerto Rosario is a river port and a major goods-shipping center of Argentina, located in the city of Rosario.

Strategic location in the center of the Paraguay-Paraná river and the bioceanic corridor, with wide road and rail connectivity



The port of Rosario, forms a nucleus of economic activities inside the country. Relevant in the set of countries that constitute MERCOSUR.

The port has land connections that reduce the costs of the logistics chain of users:

- **Truck Network:** 2 highways and 4 national routes in addition to the Rosario-Victoria bridge connection
- **4 railway lines**

The port covers and concentrates the activity of the Rosafé Zone: the main export region of grains and by-products of Argentina and has a high level of industrial development. In addition, TPR constitutes a natural transshipment hub with neighbouring countries, with which its area of influence is even greater.

Key fact

- TPR is the only Port in Argentina with no restrictions or limitations to receive all kind of cargoes with no volume restriction by train.
- TPR operations are not restricted by city growth. Sustainable for community.

TPR is a multipurpose terminal integrated into regional, national and international logistics that offers all kinds of services.

It works as a multimodal port becoming reference in the region, aspiring to become the leading river port in Argentina in container cargo and the best solution for bulk and general cargo.

Infrastructure and equipment:

- ✓ Berth: 1,600 m
- ✓ Docks: 3
- ✓ Surface: 66.9 hectares
- ✓ Break Bulk storage area: 65,000 m²
- ✓ Bulk storage area: 78,000 m³
- ✓ Tanks: 26

- ✓ Container yard, suitable to dangerous cargo

- ✓ Other services: scanner, fiscal scales, internal networks and connections with railway lines

key fact

→ World's largest terminals are above 1,000 m of quay length. TPR has 1,600 m. Biggest terminal in Argentina in terms of quay length.



Location

- Santa Fe Region – Argentina
- Direct access to Atlantic Ocean
- Main non-private port in the region
- Strategic hinterland
 - Argentina (Central, north, west, east)
 - Brazil (Corumbá area)
 - Bolivia (east)
 - Paraguay (total)
- Deepest upriver port in Parana River waterway

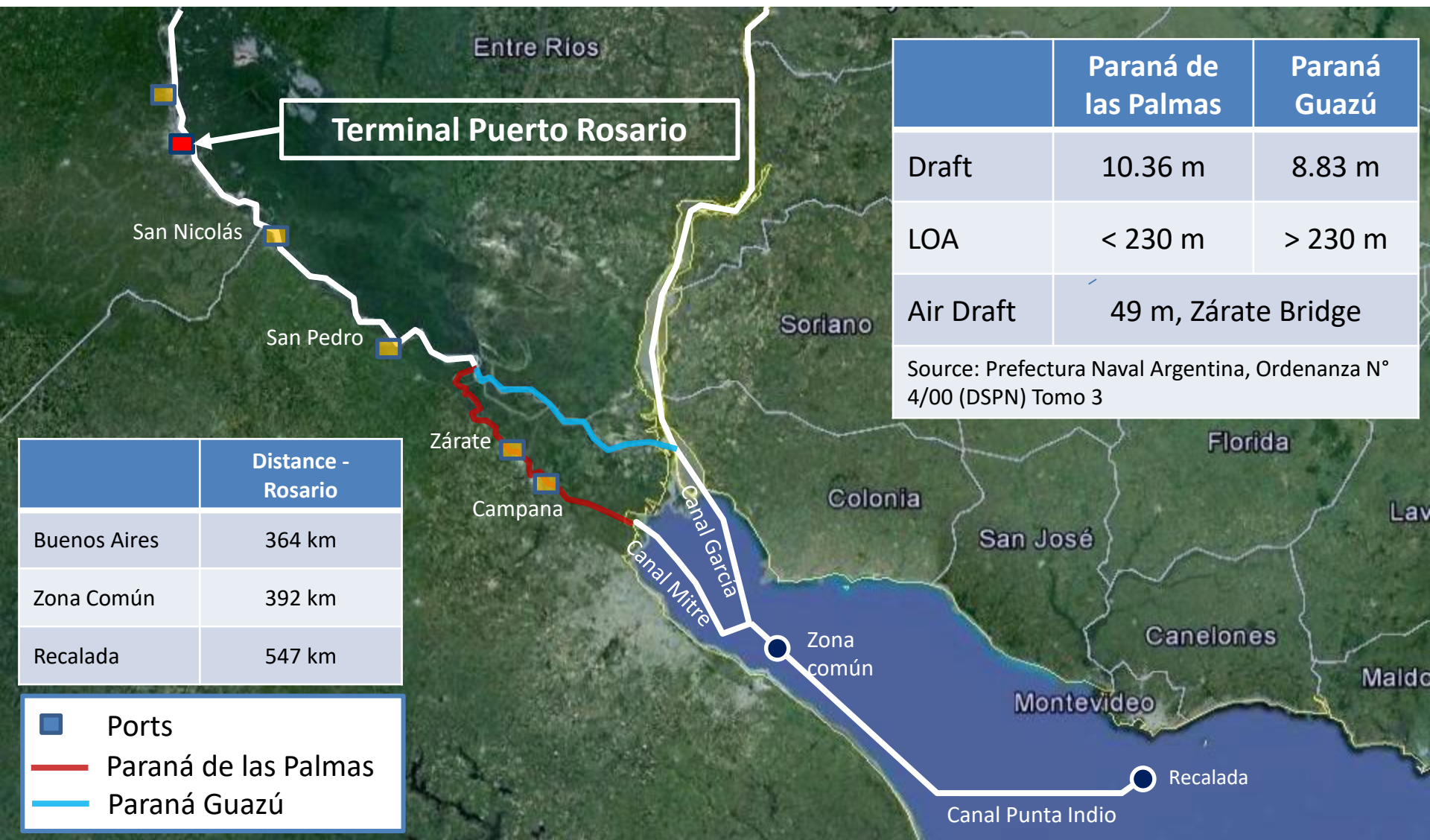




Hinterland TPR:

- Main export production in Argentina
- Highest bulk-container conversion potential in Argentina
- High industrial and consumption area in the region
- Neighbor countries= Natural transshipment hub

Port Access



Terminal Puerto Rosario

	Paraná de las Palmas	Paraná Guazú
Draft	10.36 m	8.83 m
LOA	< 230 m	> 230 m
Air Draft	49 m, Zárate Bridge	

Source: Prefectura Naval Argentina, Ordenanza N° 4/00 (DSPN) Tomo 3

	Distance - Rosario
Buenos Aires	364 km
Zona Común	392 km
Recalada	547 km

- Ports
- Paraná de las Palmas
- Paraná Guazú

Connectivity



18%
Ctrs moved
by Train

Rail and Road connection
No interference to the city
High efficiency access




The Multipurpose Terminal

Terminal Puerto Rosario S.A.

Area: 66,9 Ha
Berth: 1.607 m
Rail: 23 Km



Shore operations

- Container Operations
- M&R for dry and Reefer containers
- Ro/Ro Operations
- Dry bulk load/disch/TS
- Liquid bulk Load/dich/TS
- Break Bulk Load/disch/TS
- Vessel supply



Land services

- Storage (open sky / Covered)
 - Break bulk
 - Dry bulk
 - Liquid bulk
 - Containers (Full/Empty)
- Container CFS
- Bonded warehouses



Complementary Services

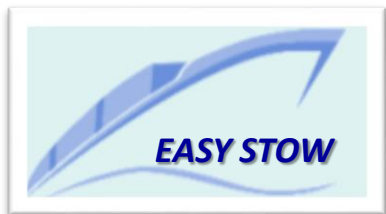
- Truck/train weighing
- Custom and Senasa offices inside the port
- Logistic support

Container Terminal Equipment



General/Bulk Cargo Equipment

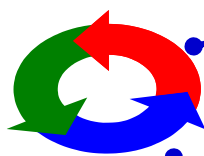




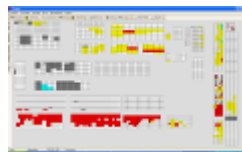
Gate



Vessel Planning



EDI



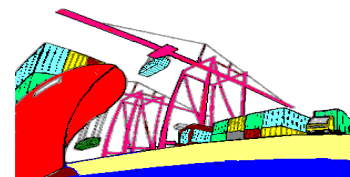
Yard Planning



Real time working

The screenshot shows a software interface with a sidebar menu on the left containing categories like 'Administración', 'Operación', and 'Logística'. The main area displays a 'Detalle' window for 'ITAL FEUCUA / 0810-0106' with various data fields and a table of operations. The table includes columns for 'Fecha', 'Desde', 'Hasta', 'Estatus', 'Operación', and 'Origen'. The table contains several rows of data, such as 'Apertura/Cierre Fajas' and 'Tránsito de Carga'.

Vessel Operations

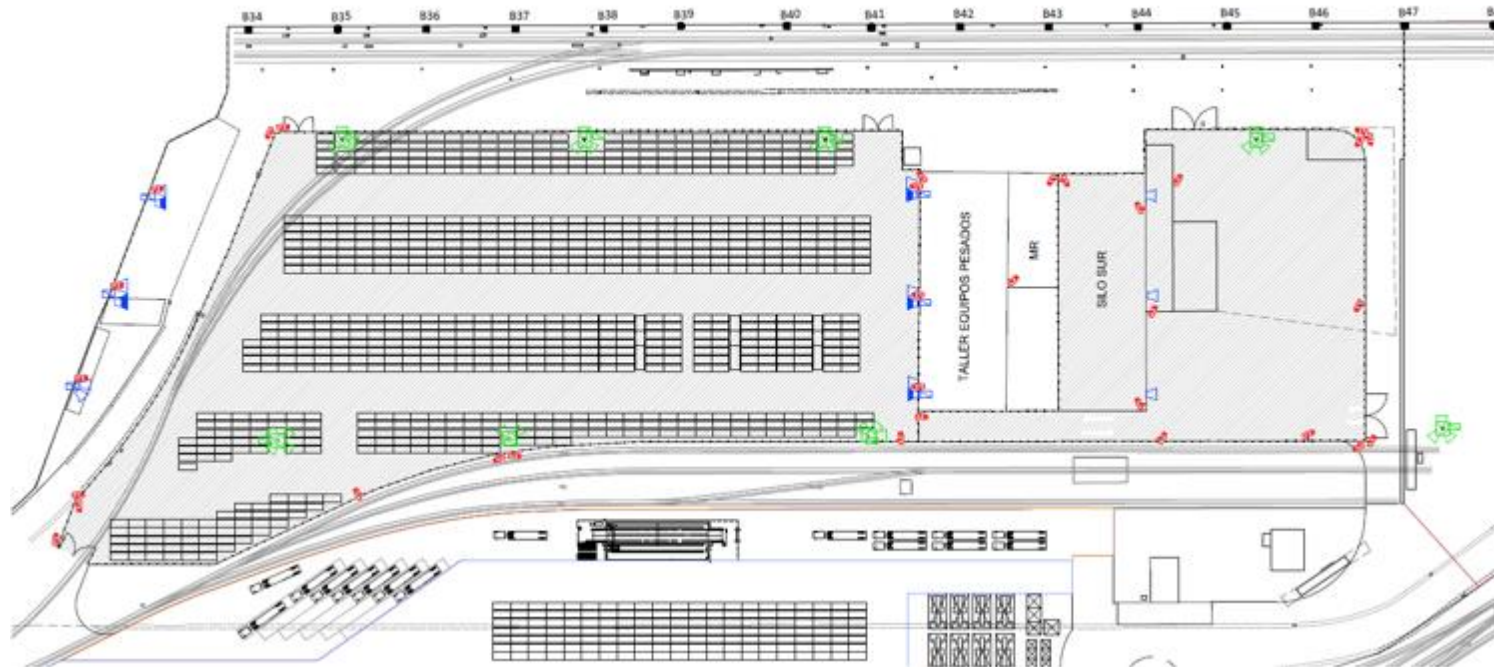


TPR ON-LINE
(www.tpr.com.ar)

Security

ISPS Certified facility

- 24x7 monitoring and security management
- Customs and Marines on site
- Own security officers
- Fire / Emergency protection

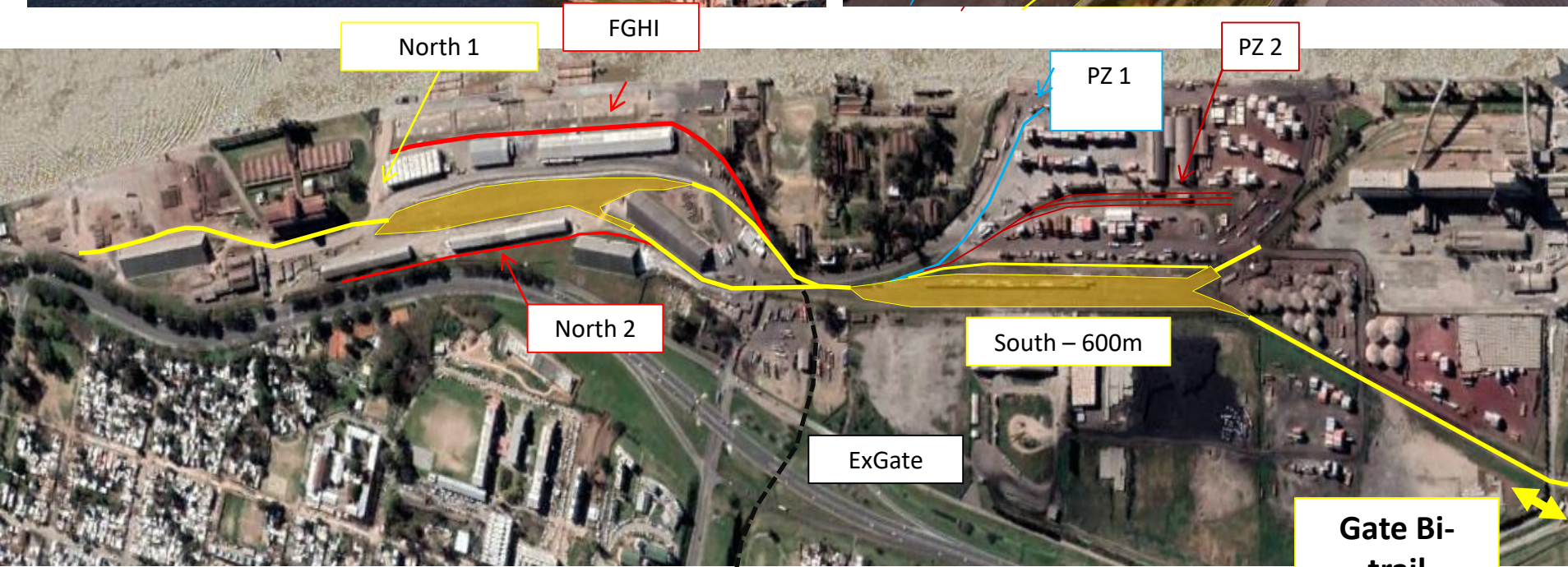


- Priority for management
- ISO 45000 certified
- Intensive training
- Permanent investment
- Noise Level and Air Quality monitoring



- Improvements in Workplace
- Use of PPE
- Infrastructure refurbishment
- Infrastructure for safety improvement

Railways



Container terminal expansion

2015-03



2019-10



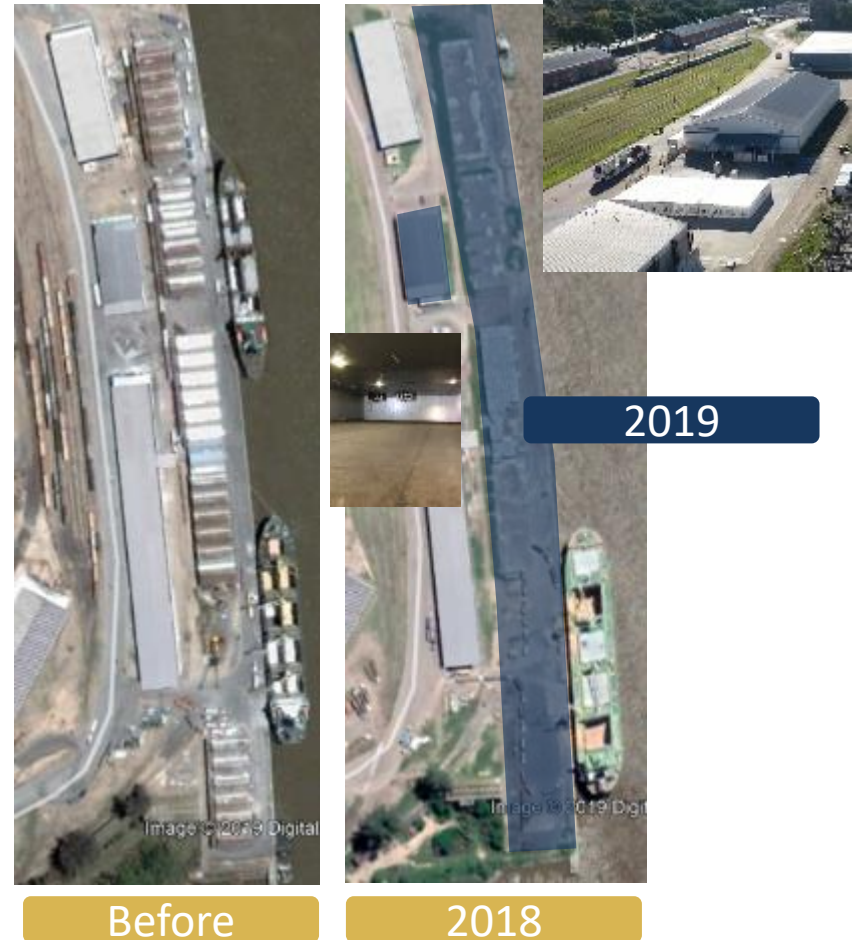
Terminal expansion



- 2018: Warehouses demolition
- Full wharf repair
- Cold chamber
- Able to work directly from train or truck
→ **Status: Cold Chamber Ready, finalizing wharf reparation.**

Key Fact

→ **Only port in Argentina with direct container stuffing for fruit. From train and trucks.**



South Terminal Scanner

- The most efficient scanner in South America
- Radiation
- Steel penetration
- Up to 60 ctrs/Hour

→ *Status: Operating*



- Port with high potential and privileged location
- Growth capacity for long term projection
- Very well connected
 - i. Rail: only port in Argentina with direct access of all cargo trains in the country
 - ii. Road: Direct access to national and international highways
 - iii. Water: deepest upriver port in Parana River, natural gateway for North, Center and West Argentinean region.
- Important support from shareholders
- Available to analyze dedicated projects for all kinds of cargo, and scale & scope economies for clients
- Long term focus and commitment
- Main goal: ***CUSTOMER SATISFACTION***

Thanks

