



TERMINAL PUERTO COQUIMBO

September 2022



AGENDA

1. WHO WE ARE
2. PORT DEVELOPMENT
3. WHAT SETS US APART





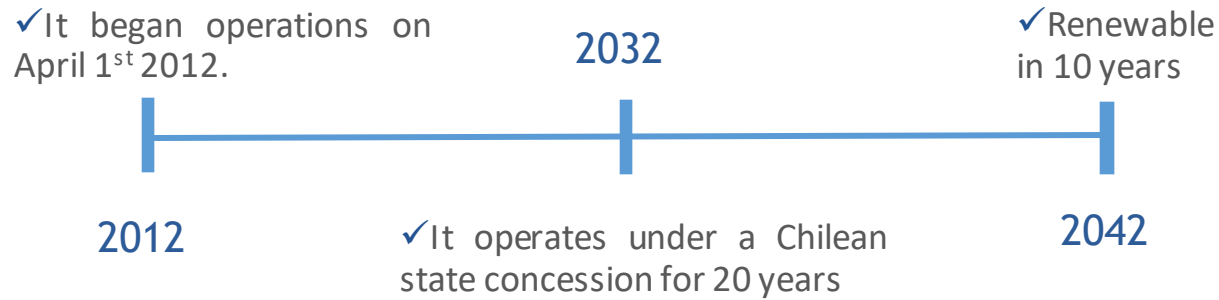
WHO WE ARE



WHO WE ARE



➤ Concessioned Port

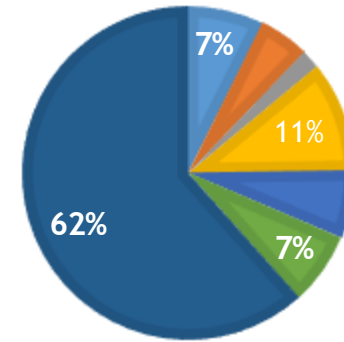


➤ Shareholding

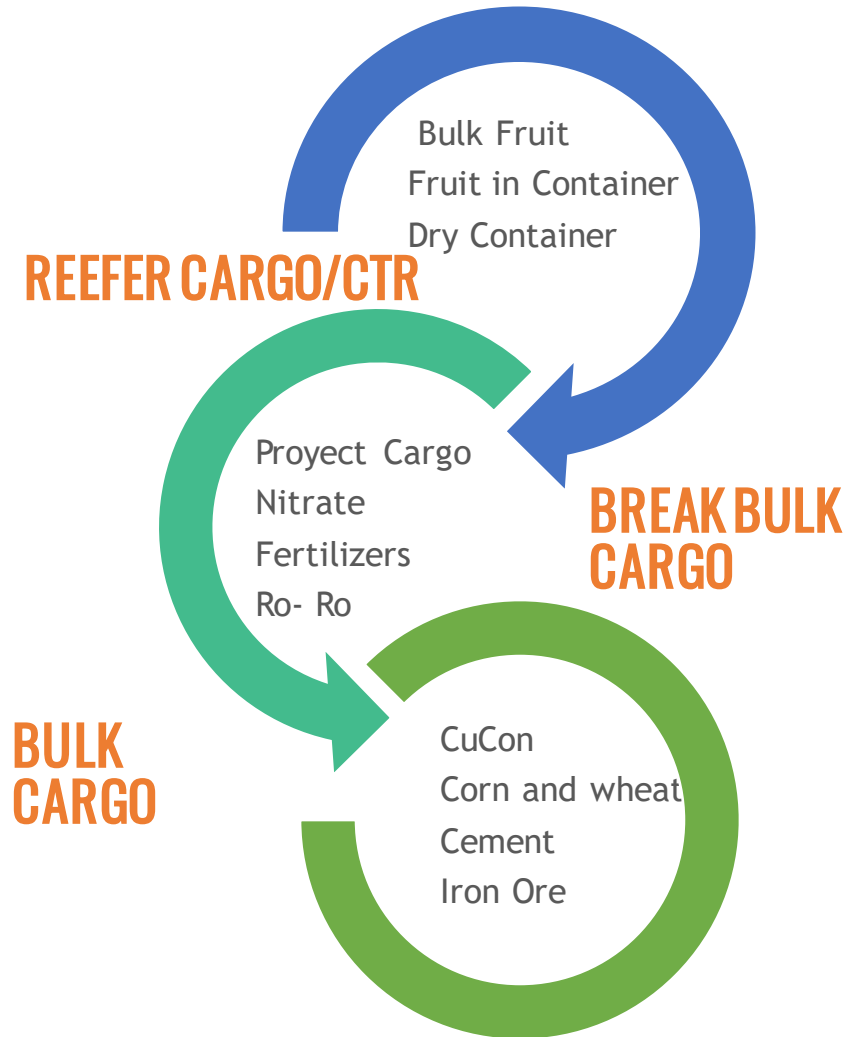


TPC is a multipurpose port located in the Coquimbo

➤ Average load mix 2019-2021



- Break Bulk Cargo
- Iron Ore
- Project cargo
- Bulk Fruit
- Corn and wheat
- Cement
- CuCon



OUR TERMINAL

INFRASTRUCTURE

Storage

12.400 m²



Yard

32.000 m²



2 Berths



Berth Length: 378 mts.

Draft: 9,40 mts.

Soon: Berth 3



LOA: 300 mts.

Draft : 14,0 mts.

EQUIPMENT

1 Shore Crane

Gottwald HMK280E (Berth 1 & 2)



Soon:

2 Next Generation Shore Cranes

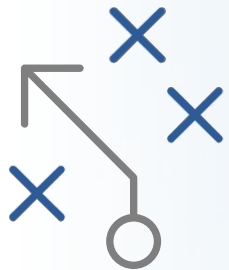
3 Reachstackers



3 Terminal Tractors

Auxiliary equipment

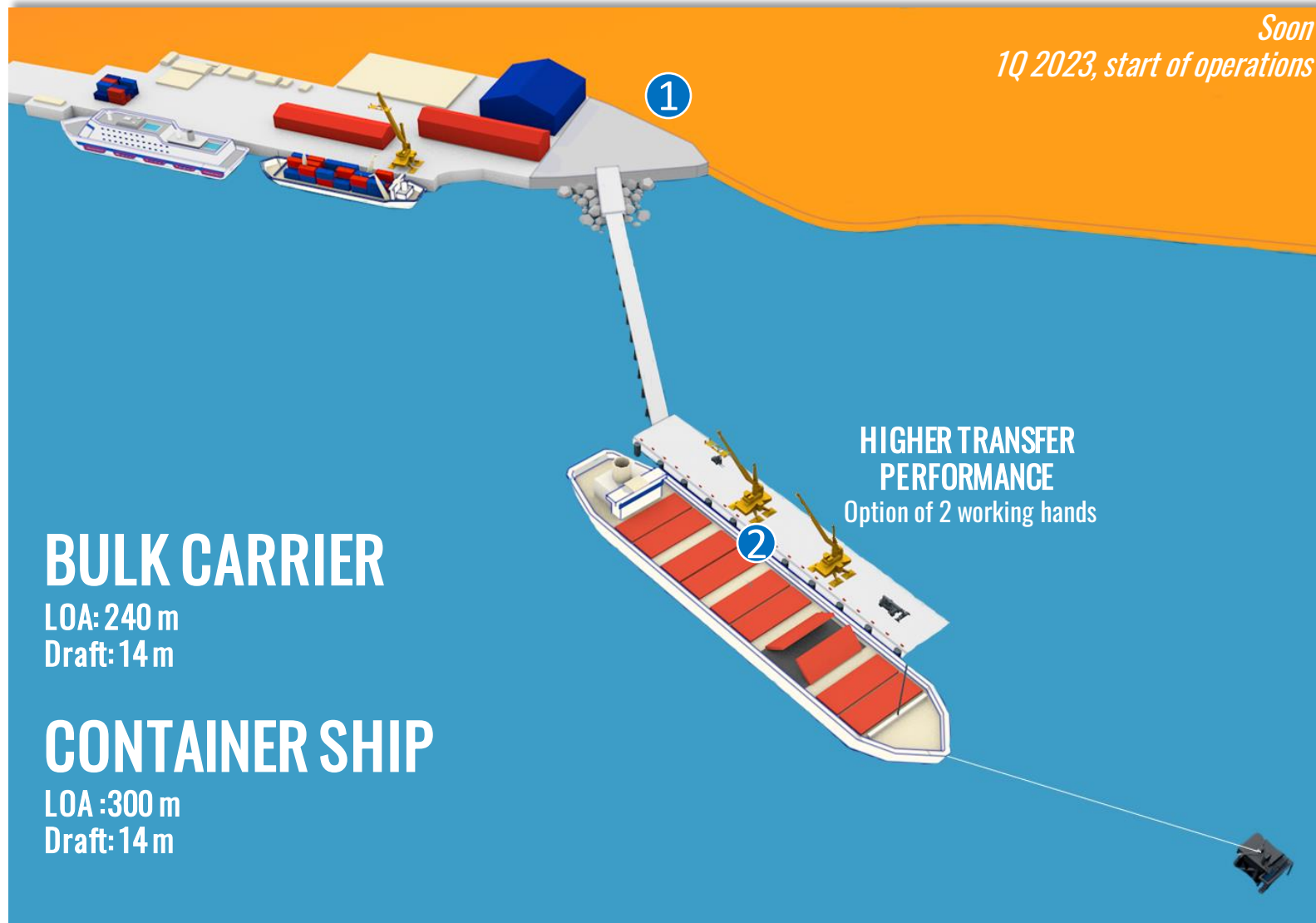




PORT DEVELOPMENT

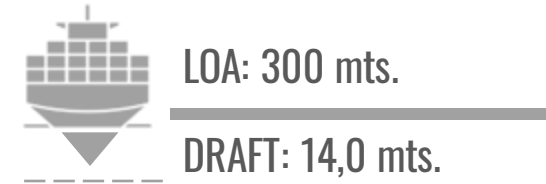


OUR TERMINAL – NEW BERTH 3



INFRASTRUCTURE

- 1 AREA 11.000 m²
- 2 BERTH



EQUIPMENT

Shore Crane

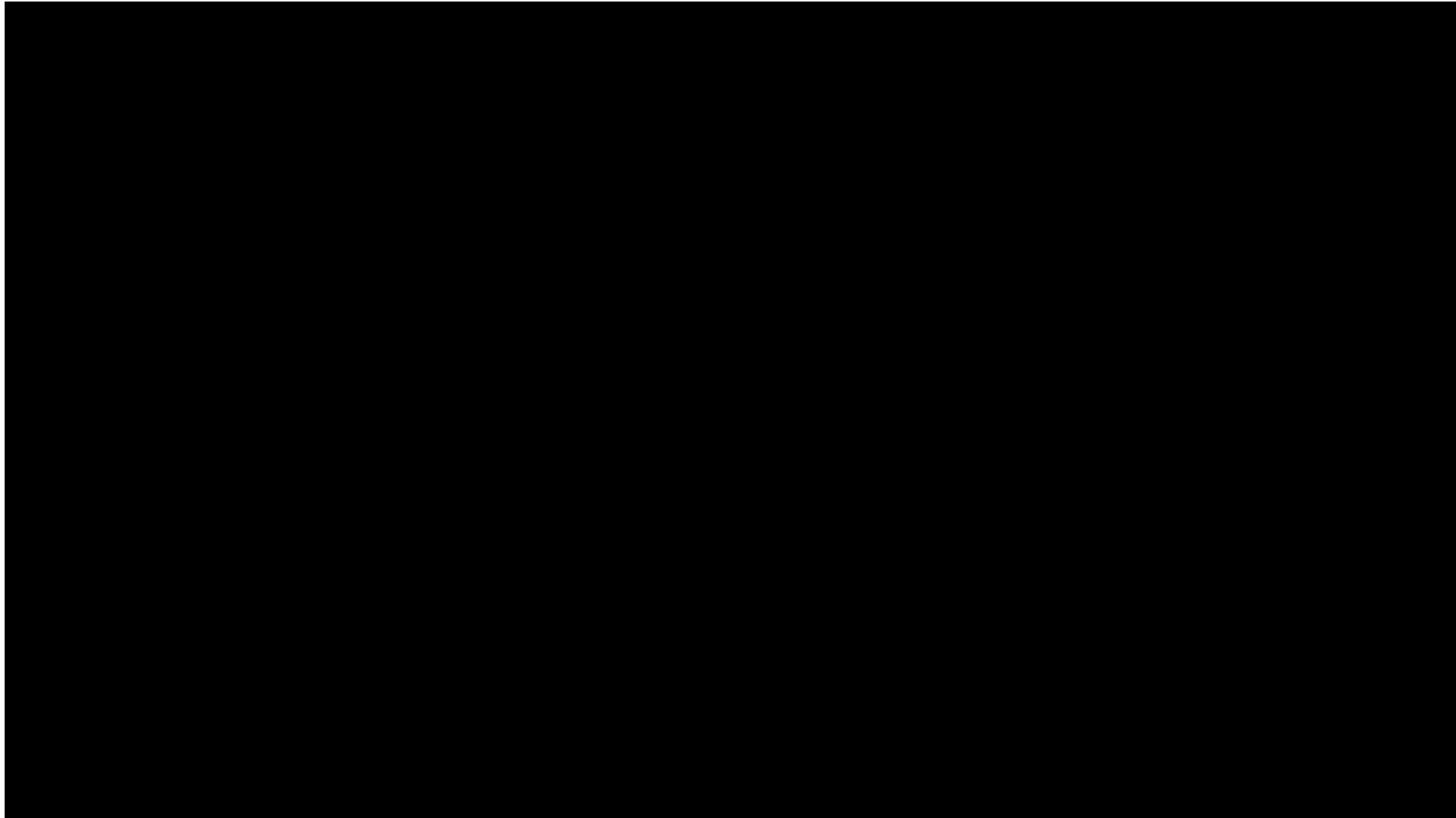
2 Gottwald ESP6

- ✓ 125 ton. SWL
- ✓ Outreach 49 mts. (16ta. fila)
- ✓ Next Generation



NEW BERTH 3

The Project progress has reached 66,8% by August





WHAT SETS US APART



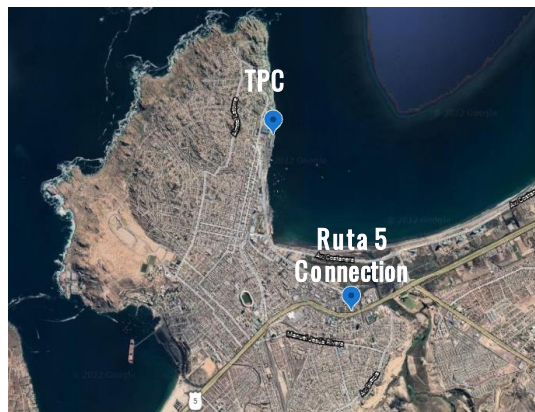
Privileged weather conditions

- ✓ Natural condition of the bay, which protects the wharf.
- ✓ 2% downtime per year.

Low port utilization

- ✓ Site utilization less than 20%.
- ✓ Considering a capacity of 2.5 m tons to be reached as of 2023 and the 500k tons mobilized in 2021.
- ✓ Practically every vessel calling at TPC has room on arrival.

HIGH
RELIABILITY



Union
Stability



Relationship with
communities

- ✓ Excellent relationship with TPC neighboring communities. They have enabled uninterrupted operations
- ✓ Our collaborators are committed to the success of the port.

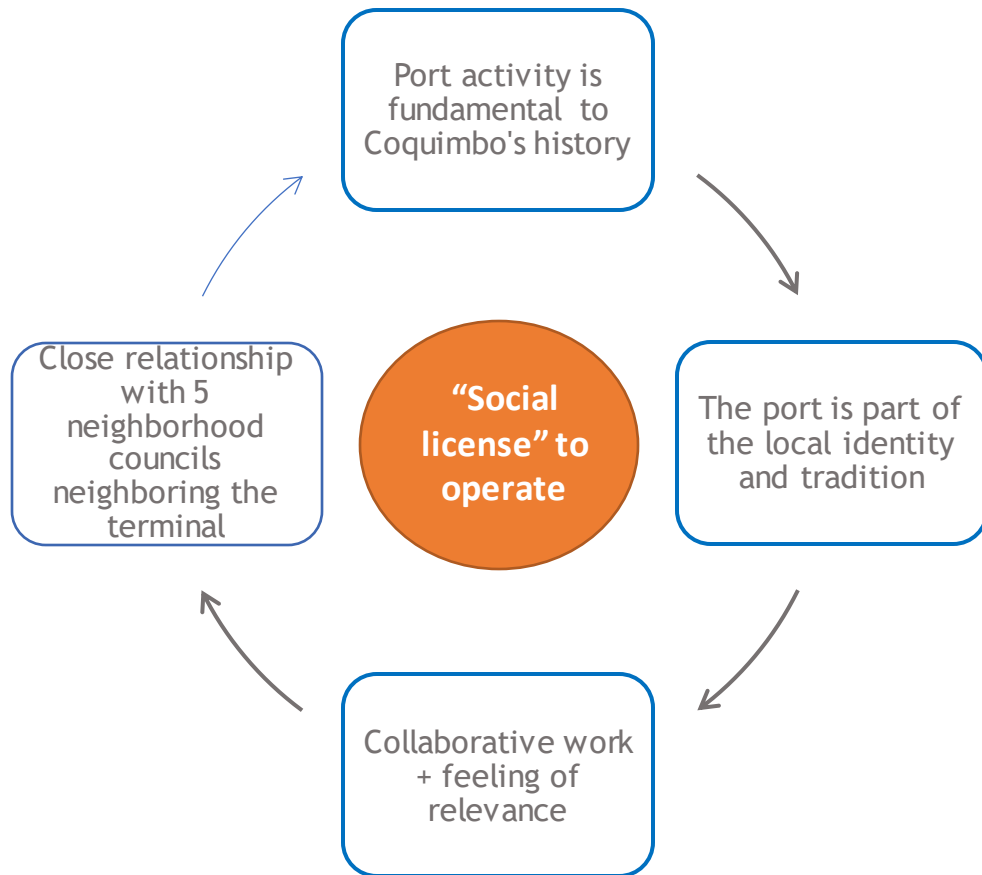
Strategic location

- ✓ Only 3.5 kilometers from Route 5, the main land communication route in the country.
- ✓ Located 475 km north of Santiago de Chile

COMMUNITIES

COQUIMBO: PORT TRADITION

The port is fundamental to Coquimbo's identity and economy.



Approximately 10% of the GDP of the Elqui Province depends on activities directly or indirectly related to the Port of Coquimbo (UCN, 2020)

COMMITTED TO SUSTAINABILITY

FOCUS ON PEOPLE

- ✓ Responsible for the safety, well-being and health of employees

SECURITY

- ✓ Our priority in each operation is to protect the safety of people, the integrity of the cargo, as well as mitigating environmental impacts

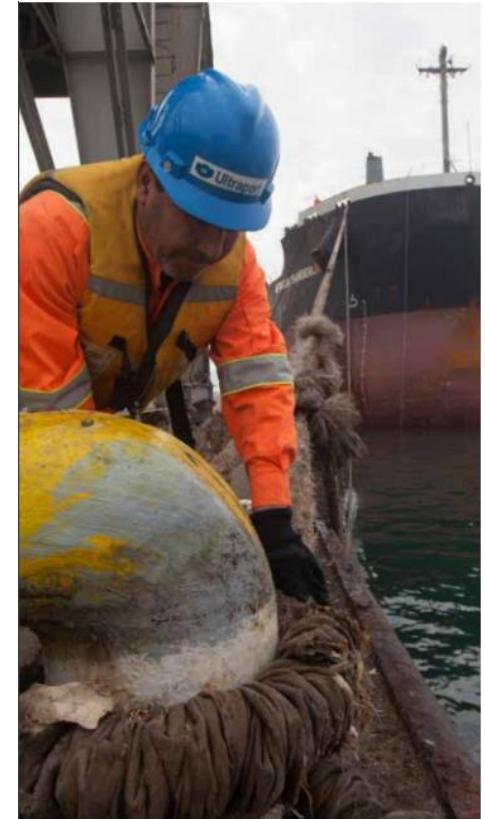


SAFETY AND ENVIRONMENT

- ✓ Measurement of our Carbon Footprint
- ✓ Waste management

OPERATIONAL EXCELLENCE

- ✓ Trust and transparency
- ✓ Continuous improvement
- ✓ Efficient use of resources



COMMUNITY

- ✓ Straight communication with the community
- ✓ Strongly committed to the social development of neighbors





TERMINAL PUERTO COQUIMBO

September 2022

