

The image is a promotional graphic for TPS Valparaíso in 2022. It features a background of a port at dusk with three large blue gantry cranes and a vast yard filled with multi-colored shipping containers. The containers are stacked and labeled with various shipping lines such as APL, Hapag-Lloyd, Hyundai, and MSC. The city of Valparaíso is visible in the distance across the water. The text 'TPS - VALPARAÍSO -' is at the top, '2022' is in the middle, and 'WE ARE TPS' is in a white box at the bottom right. Contact information is provided in a light blue bar at the very bottom.

TPS

— VALPARAÍSO —

2022

WE ARE TPS

AGENDA

1. GENERAL INFORMATION
2. OUR TERMINAL



GENERAL INFORMATION

- 50% of the national population, more than 77% in the central macro-zone.
- Gateway to the Pacific for MERCOSUR countries.
- Perfectly connected by road and rail with the interior of Chile.
- Railway connectivity to the center and south of Chile.



GENERAL INFORMATION

Valparaiso Port System



GENERAL INFORMATION



- Efficient buffer area for the coordination of cargo flows in & out of the port facilities.
- Documentation & authorities clearance.
- Safe and secure area for trucks to wait for clearance and Terminal's request.



GENERAL INFORMATION



GENERAL INFORMATION

Protected bay

➤ 95% of the waves come from SW-SSW direction.

➤ We are not affected by undercurrents

➤ Fewer tugboats

1.2 berthing / 1.1 unberthing.

	Maximum wind [nudos]	Maximum wave [metros]	Tugboat and pilot boat [Nº/Call]	Port closure days 2020	Port closure days 2021	Port closure days 2022 YTD
--	----------------------	-----------------------	----------------------------------	------------------------	------------------------	----------------------------



15



1.8



3+2

67.8
19%

81.5
22%

15.6
12%



15



1.5



2+1

6.1
1.7%

8.1
2.3%

3.2
2.4%

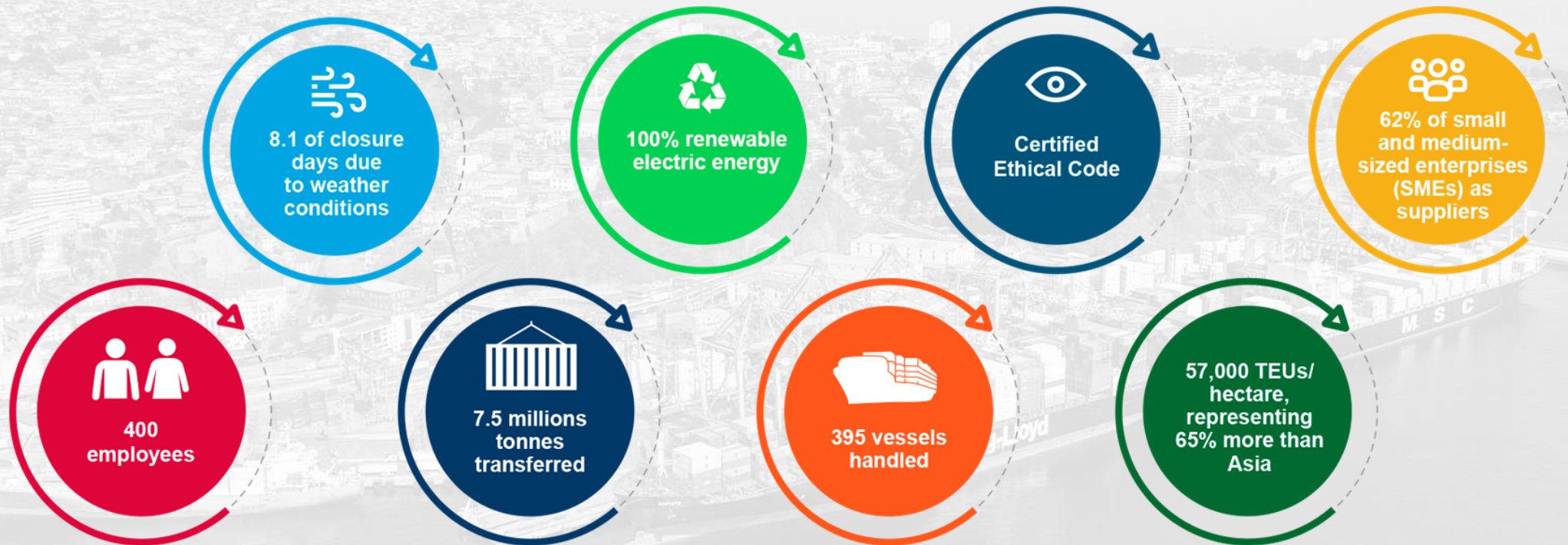
Our Terminal



OUR TERMINAL

We are a company with **22 years of experience**, dedicated to the administration of Berthing Facility N° 1 of Port of Valparaíso, under the concession Contract of Terminal 1, valid until 31 December 2029. Since 2000, we have transferred more than 165 million tonnes of cargo.

2021's summary





OUR TERMINAL

Berthing quay and operational area



QUAY 2
266m

Design Vessel
LOA 185m
Max Draft 9.4m

QUAY 1
740m

Design Vessel
LOA 336m + LOA 336m
LOA 366m + LOA 300m
Max Draft 14.1m

Operational area: 15ha

OUR TERMINAL

Sustainable Development Strategy

The strategy of TPS has our purpose at its core and declares that to achieve it, we must develop in a sustainable manner based on 5 pillars and our 4 values



Our people



OUR PEOPLE

Our employees are the driving force behind our strategy. We seek to contribute to the growth and development of each one of them, positively affecting their quality of life.

Our organization's work environment is the result of constant dialogue with trade unions and employees. In 21 years of concession, we haven't had conflicts with our unions.



TPS TEAM **400** employees ▶ of which **46%** lives in Valparaíso city

66 are women | **334** are men

44 is the average age of all the people working in TPS

398 are Chilean | **2** are foreigners

74 vacancies **16** in-house personnel
58 external employees

Reliability and transparency



RELIABILITY AND TRANSPARENCY

Our transparent and reliable relationship strategy is based on different procedures and standards, that provide us with a framework and opportunities for improvement to contribute to sustainable development.



ISPS Certification: International Ship and Port Security, granted by the International Maritime Organization (IMO) in force since 2004. We were the first Chilean port to obtain this certification.



Solas Agreement: In compliance with the IMO, in 2016 we implemented a container weighing system on the yard cranes, which allows to verify and certificate the weight of a container without having to interrupt the routine operation.



ISO 45001:2018: International norm for work-related safety and health management systems, destined to protect the workers and visitors from accidents and work-related illnesses, promoting safer and healthier work environments. In force since 2018 and replaces OHSAS 18001, in force since 2013.



ISO 14001: 2004: It allows the development of an environmental management plan that includes environmental objectives and goals, policies and procedures. In force since 2002.



Carbon Footprint Measurement Certification: Since 2013, we have the certification that confirms the implementation of a methodology to measure and control Greenhouse Gases (GHG).



HuellaChile: Recognition by the Ministry of the Environment that certifies reaching the level of quantification of direct, indirect and other indirect greenhouse gases, in accordance with the requirements of the HuellaChile Programme and NCh-ISO 14064:2013/1. In force at TPS since 2018.



ISO 26000 Social Responsibility: In force since 2014, when we developed an in-depth analysis of our practices and we aligned them to the 7 Subjects and 7 Principles contemplated by the standard.



Great Place to Work: We participate yearly in the working environment measurement conducted by Great Place to Work Chile Institute.



Renewable Energy Seal by IMELSA Energía certifying that all the electric energy we use at TPS comes from renewable sources.



Certification of the Crime Prevention Model granted by Prelafit Compliance consultancy in 2021 that recognises the model adopted by TPS and its implementation.

Social Development



SOCIAL DEVELOPMENT

We seek to enhance social development of the territory in which we are located. We aspire to be good neighbors, deliver local employment opportunities, improve people's quality of life, and creating spaces for entrepreneurship emphasizing local suppliers.

SME AND LOCAL SUPPLIERS




 **43%**
of the suppliers are local companies

 **62%**
of small and medium-sized enterprises (SMEs) as suppliers

 Average of **14**
payment days to SMEs suppliers

 Average of **21**
payment days to suppliers

COLLABORATIVE AGREEMENTS

 Support to the entrepreneurship championship "Nothing Stops Us"

 **1+1**
campaign with Firefighters from Valparaíso

Support to the Ganamar programme for
 **400**
children and adolescents from the city

 **120**
kids at the Children's Football Tournament

 **19**
trainee students



Caring for the Planet



CARING FOR THE PLANET

Contribute from our reality to a global challenge, reducing our environmental footprint and identifying opportunities to use resources more efficiently.

WASTE

 **232,445**
kilos of non-dangerous waste

 **183,163**
kilos of dangerous waste

RECYCLE

1,443
Kg of white paper

85,540
kilos of industrial waste

7,302
Kg of tyres

2,403
kilos of technology waste

Awareness-raising campaigns for resource use

Circular Economy Cleaner Production and Logistics Chain Agreement of Valparaiso

Health, Safety and Environment training programmes

100% renewable electric energy contract

Customers and operational excellence



CUSTOMERS AND OPERATIONAL EXCELLENCE

We ensure that our service and processes attain the **highest standards** quality, and we profitably manage our business fulfilling our customer's requirements and respond to the dynamism of our markets.

The maritime and logistic industry contributes over **30% of the region's GDP.**

Valparaiso has 3 main industries: Universities, Tourism, and Maritime. The Logistic and Maritime Industry is the only one that hasn't stopped during the pandemic.



Territory connectivity through roads and railways



Connecting services to Asia, Europe and both coasts of North America



Pre-gate in ZEAL with exclusive roadway allowing efficient logistics to the port

More than

 **3,000**

reefer connections capacity

 **2,25**

average moves per container where the minimum is 2 movements

 **2.3%**

of closure days while other ports in the area have around 30% closure days

Capacity to handle

 **2**

Post-Panamax vessels simultaneously, with 52 metres of beam



NAVIS operating system integrated with Silogport (PCS)



Optical Character Recognition (OCR) system at Gates

95%

of Chilean import and export goes thru maritime ports.



Terminal facilities, equipment and capacity



9 Ship to Shore (STS) gantry cranes 5 of which are Super Post-Panamax



15 Rubber Tyred Gantry (RTG) yard cranes



1 Gottwald mobile crane

43 Tractor trailers



29 Platforms for more than 3,000 reefer connections

7 TopLifters



2 Spill bins



9 Reachstacker



2 High tonnage forklift



11 Forklift



3 Out of Gauge (OOG) handling gear



17 spreader



48 chassis



1 80-ton trailer bed



Optical Character Recognition (OCR) system at Gates



NAVIS operation system integrated with Siloport (PCS)



740

metres-long main berthing facility

which allows to attend 2 Post-Panamax vessels simultaneously



266

metres-long secondary berthing facility

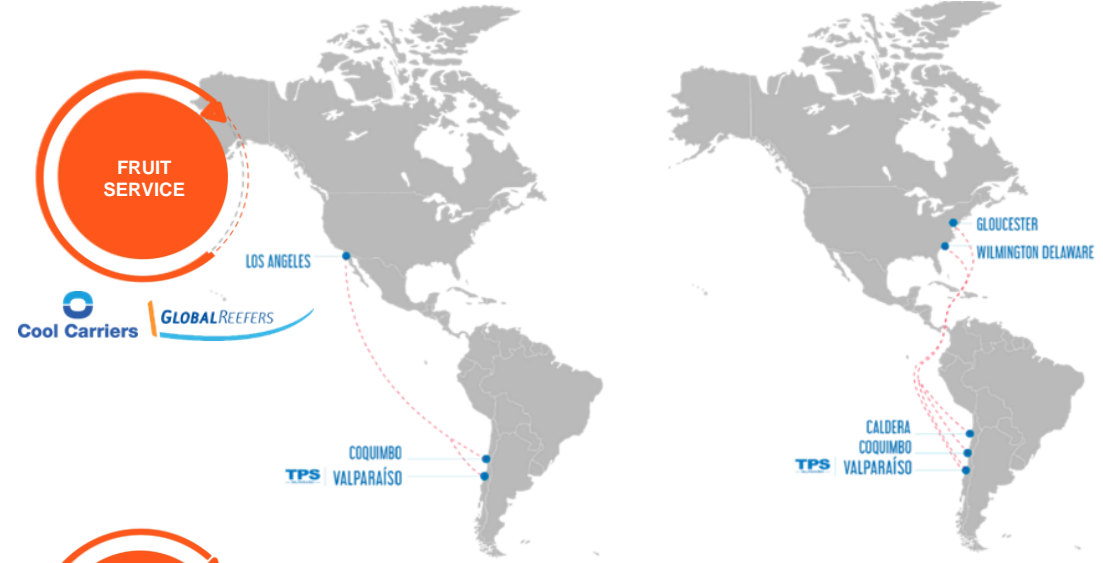
CUSTOMERS AND OPERATIONAL EXCELLENCE

Shipping Services

ALX1-AN1
INCA
SERVICE



FRUIT
SERVICE



CLX - MAERSK
SERVICE

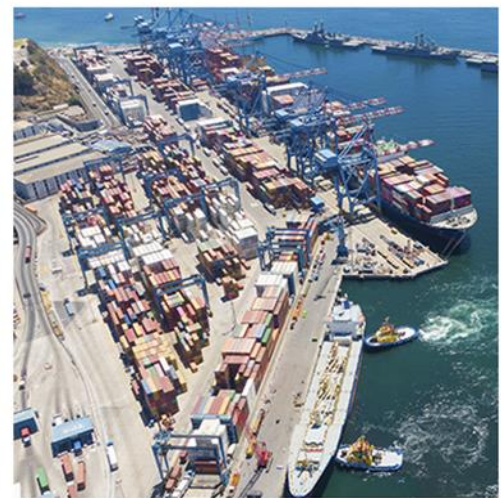
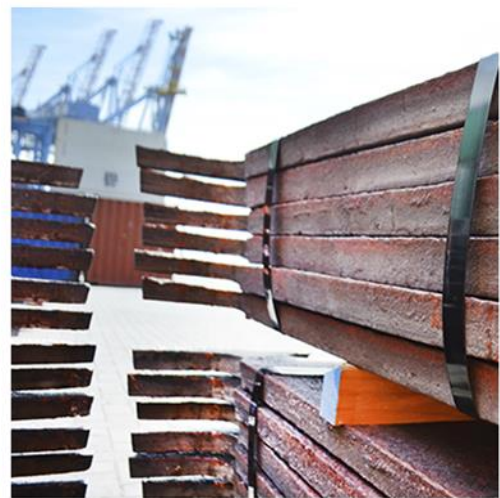
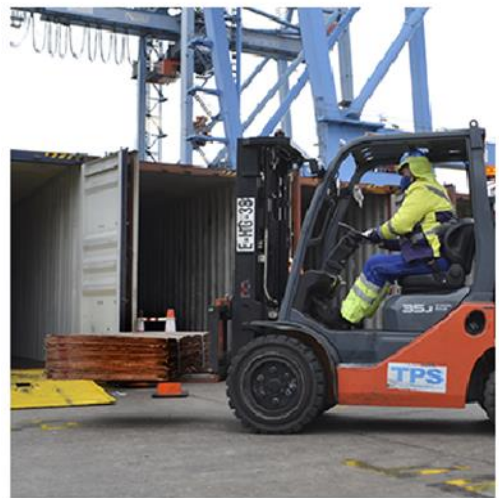


MSC EUR
SERVICE



CUSTOMERS AND OPERATIONAL EXCELLENCE

Our Services



- Safety and Security measures above standards.
- Random alcohol and drug tests.
- Portable explosives and narcotics trace detector.

**CCTV surveillance system
with over 300 cameras working 24/7**

TPS
— VALPARAÍSO —

