



Port of Montevideo



MONTECON

PUERTO DE MONTEVIDEO | Nos mueve Uruguay

ABOUT US

Montecon is the main operator of the public areas, both for containers, general cargo and project cargo. Our clients receive an integral service of world class quality.

Since 2000 the company has been developing with strength, to the point that it is one of the main operators of the Port of Montevideo. Montecon is a company belonging to Neltume Ports (www.neltumeports.cl), whose shareholders are Ultramar (Chilean company) and ATCO (Canadian Group based in Alberta), which makes us part of a leading company in port development and operations in the region.

This combination allows us to project great aspirations of logistic development for Uruguay.

PORT OF MONTEVIDEO: PARTICULARS



Berth C & D:Max Draft 12,0 mts

QUAYS: 3-4-5 / 6-7 / 8-9
Max Draft 10,5 mts

Access Channel:
34.5 km.
Dredged to -12,00 M.
At Zero tide.

PUBLIC AREA/BERTHS



NAVY/SERVICES



ACCESS TCP



PORT OF MONTEVIDEO: PARTICULARS



PUBLIC AREA/BERTHS



NAVY/SERVICES



ACCESS TCP



- 1.808 mts Front Quay
- Deep Sea / Feeder Services

- 1000 Reefer Plugs
- RTG & Reach Stacker based ops
- 9.000 Teus (Static capacity)

All quays:
10,5 Depth at zero Tide
(+0,9 regular tide)

Berth C&D:
12,0 Depth at zero Tide
(+0,9 regular tide)

TERMINAL SHORE OPERATIONS



1

SPP berthed as from June 2013 with vessels of 334 mts lengths

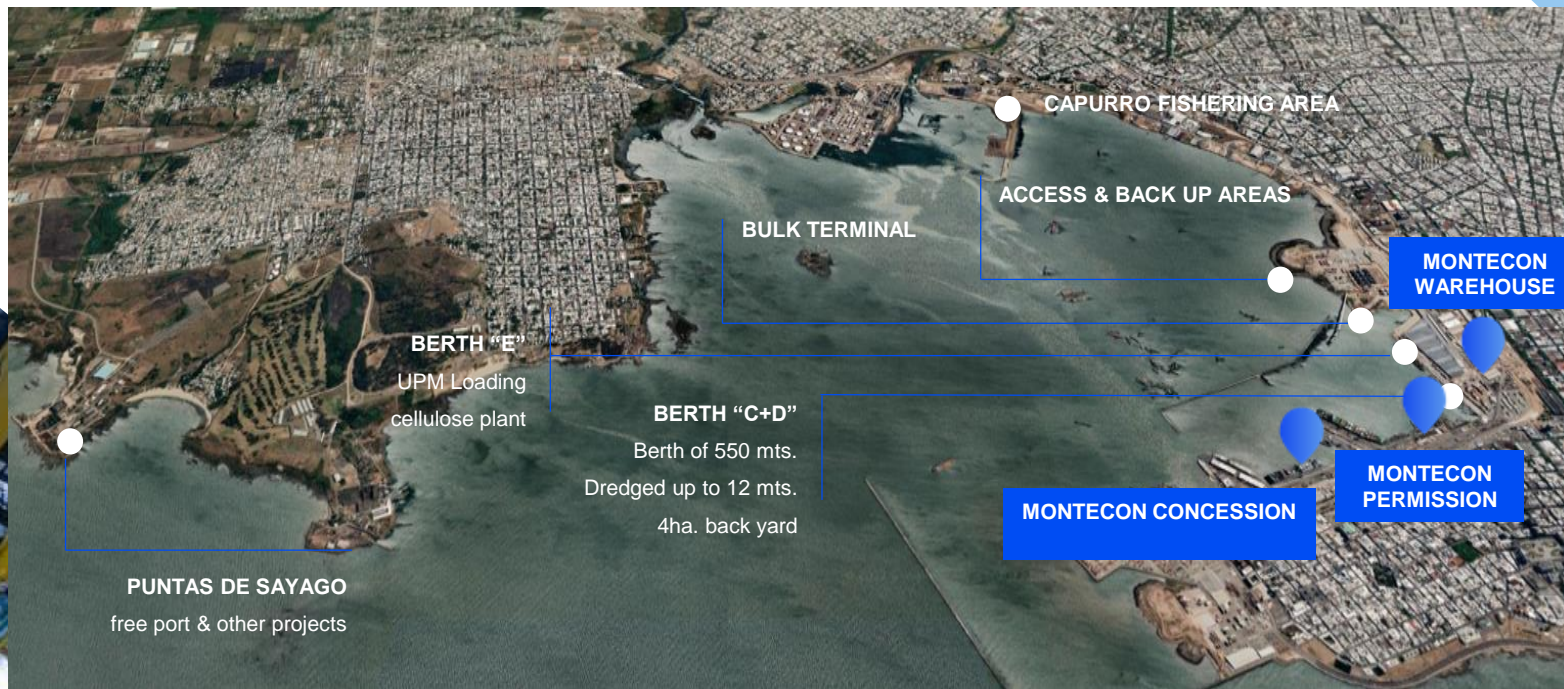
2

Berth C+D Available as from 2019

3

Montecon – Depo20 CFS/Warehouse activities more than 8000 sqm for logistic activities.

MVD PORT: HARBOUR DEVELOPMENTS & PROJECTS





TERMINAL



MONTECON

PUERTO DE MONTEVIDEO | Nos mueve Uruguay

TERMINAL SHORE EQUIPMENT

8 Mobile Harbour Cranes 100 tons Safe Working Load Capacity

3

3

1

1



**Liebherr
LHM800**

**Liebherr
LHM600**

**Liebherr
LHM500**

**Gottwald
HMK6407**

super-post
panamax
(21/20 rows)

super-post
panamax
(19 rows)

super-post
panamax
(17 rows)

post
panamax
(17 rows)

TERMINAL SHORE EQUIPMENT

- 3 RTG stacking 5+1 High / 6+1 Wide
- 2 ERTG stacking 6+1 High / 10+1 Wide
- 13 Reach stackers (Laden containers)
- 47 Terminal tractors + Chassis
- 1000 Reefer plugs
- 3 Man-lifts units -Reefer Monitoring
- 11 Forklift (2,5 up to 8,0 tons)

2PP



14RS



3RTG



47TT



MONTECON : PARTICULARS

NAVIS – TOS

Started operating from, September 16th 2017

NAVIS is an operational management software specific for Ports.

Being used in more than 250 port terminals over the world.

A powerful tool that uses highly sophisticated algorithms which enable true optimization, better planning at the Terminal as well as the Vessel Operations and a better use of resources, thus reducing inefficiencies.



TERMINAL SHORE OPERATIONS



01

MONTECON
Permission
5 Years

7.900 sqm
Set/2018
up to Aug/2023

02

MONTECON
Concession
10 Years

8.840 sqm
Aug/2019
up to Jul/2029

YARD NEW AREAS



- Yard capacity 800 TEUs
Near berth



- Yard capacity 1.400 TEUs
350 reefer plugs 2 electric RTG

Operation of ships / container ships - TERMINAL

We operate container ships in the public areas of the Port of Montevideo, with more than 1,800 mts. of available dockage, using 8 mobile cranes (6 of which are Super Post Panamax) with the versatility of operating in one or several docks simultaneously.

General and project cargo

Versatility

As a multi-purpose operator, Montecon has a high versatility to adapt itself to different challenges regarding loose cargo maneuvers that require customized solutions.

Equipment and experience that sets us apart

We have trained personnel with proven knowledge and experience. We offer our know-how supported by 20 years of experience. At the same time we have the necessary equipment to attend diverse types of maneuvers.

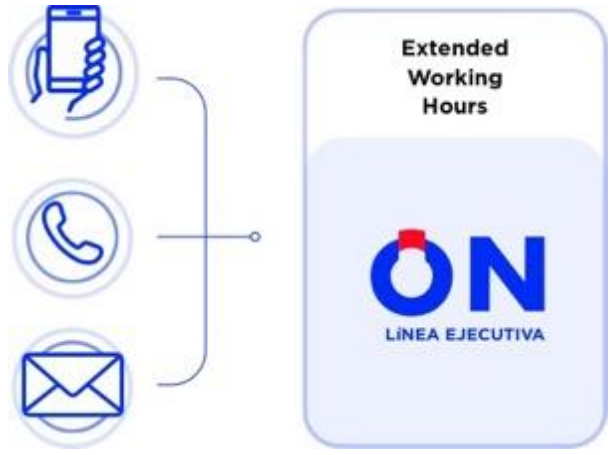


Warehouse in Free Port

Close to Quay C, we offer intra-port warehouse service, DEPO20. It has 4,000 m² indoor goods storage space with multiple positions for rack space and 4,000 m² open air areas, operated under the benefits of the free port regime, storage and handling of stock, stuffing, consolidation, racking, labeling and related logistics services.



MONTECON CLIENT ORIENTED CUSTOMER SERVICE



0800 0404
FREE OF CHARGE



MONDAY to FRIDAY
09:00 to 19:00 hs.
SATURDAY
09:00 to 13:00 hs.



150
calls per day
(average)



SOLUTION

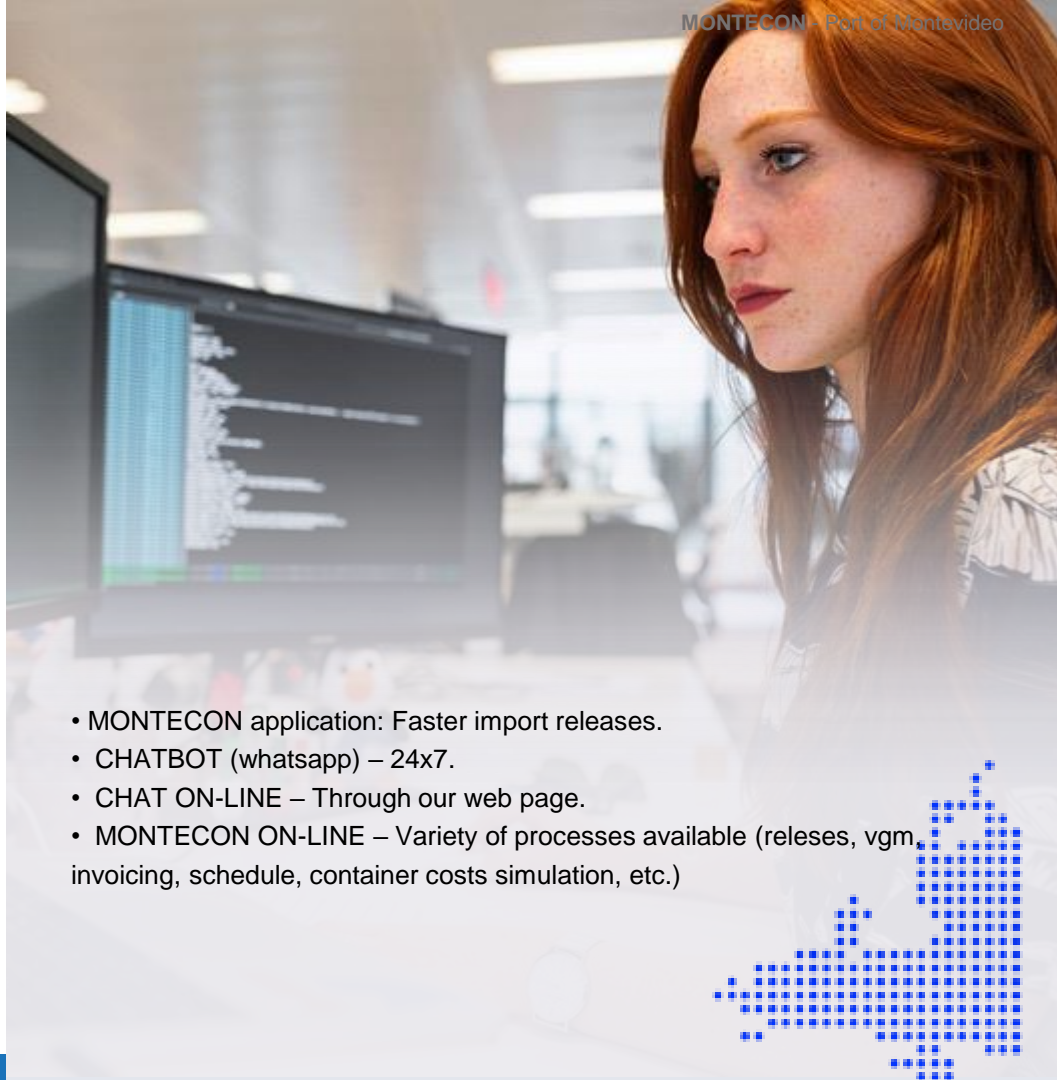
MONTECON HI - TECH

MONTECON APP: Faster import releases.

Nuevo CHATBOT
Atención 24/7



Nuevo CHATBOT EN VIVO



- MONTECON application: Faster import releases.
- CHATBOT (whatsapp) – 24x7.
- CHAT ON-LINE – Through our web page.
- MONTECON ON-LINE – Variety of processes available (releases, vgm, invoicing, schedule, container costs simulation, etc.)





PROJECTS



PROJECT & BREAK- BULKCARGO

BACKGROUND: 90% of Windmills discharged by Montecon during 2010/2016;

- Project and Break-Bulk Leading Operator
- Trained staff, client-focused
- Best practices in HSSE.

- Mobile store room
- Stevedoring, transportation & storage services.
- Tailor-made solutions for specific industries

Added value solutions

- Project & BB cargoes
- Heavy lift capacity
- Ro-Ro cargoes
- Cruises services



DEPO20



DEPO 20



Location: Inside of port premises. Opposite of Berth next to C+D



Area: 8000 square meters



Important remarks:

- Monday to Friday from 8.30 to 12:30 and from 13:30 up to 17:30 hrs + extra time.
- Trained personnel, staff and client oriented.
- Health and Safety policies
- Free port regime



Sinergy with Montecon terminal

DEPO20

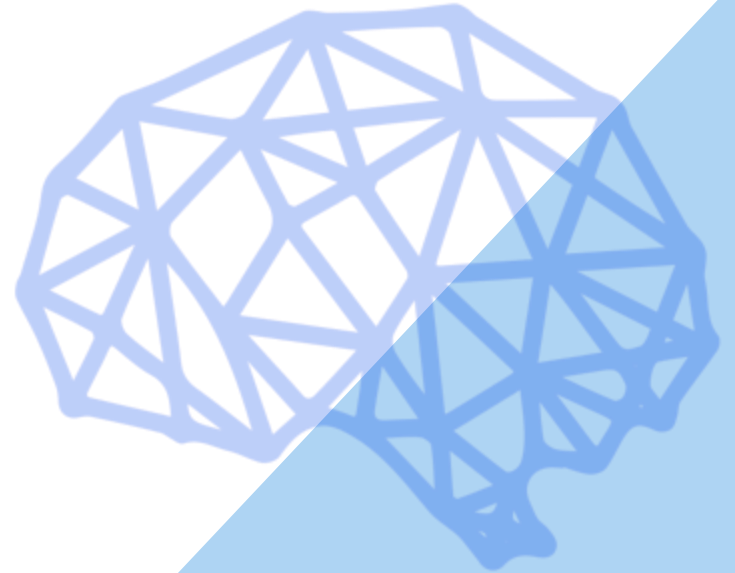
Added value solutions

- Project & BB cargoes
- Heavy lift capacity
- Ro-Ro cargoes
- Cruises services

MONTECON: BUSINESS TECHNOLOGY



Robotic process automation (RPA) Massive amount of work and repetitive tasks were replaced for a more focused analysis in order to automated tasks (control of labour suppliers for compliance with Government third-part responsibility law).



MONTECON: BUSINESS TECHNOLOGY



Computer vision

- Artificial Intelligence algorithms were trained with hundreds of terminal security video frames with the aim of tracking and recognizing objects in real time.

- The objective was to support terminal security officers in their daily tasks allowing them to react more rapidly to security events



MONTECON: BUSINESS TECHNOLOGY



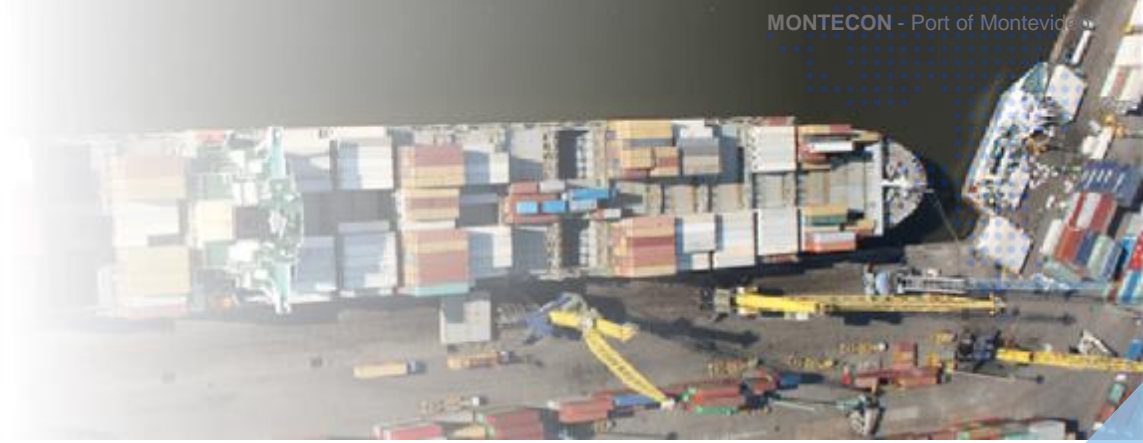
The platform integrates trade data from industry partners onto a common, secure business network, and will provide real-time, secure access to end-to-end supply chain information to all actors involved in a global shipping transaction.

The TradeLens Platform enables to take advantage of blockchain data, tracking events related to shipments and share documents with trading partners.

Blockchain addresses the underlying challenges inherent in collaborating across a distributed, fragmented supply chain ecosystem.



MONTECON: OPERATIONAL PROJECTS



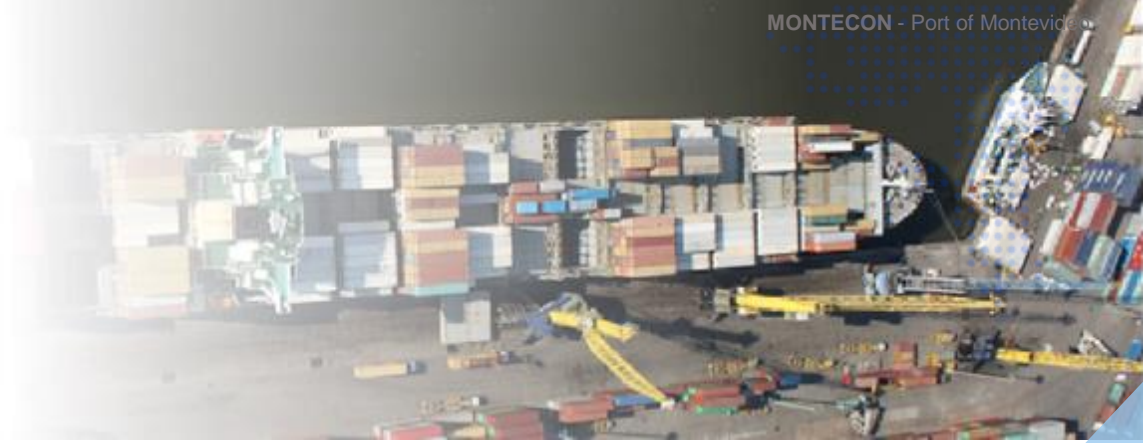
Remote reefer monitoring

The system provides real-time visibility and remote management of variables such as:

1. Container temperature and set-point
2. Power information
3. Connection and disconnection events
4. Alarms



MONTECON: OPERATIONAL PROJECTS

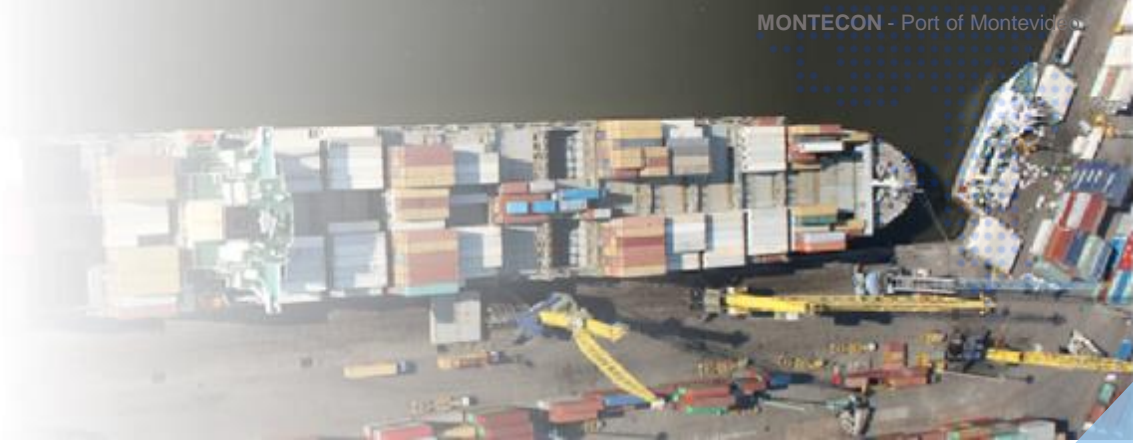


Gate OCR (in progress)

- The system relies on optical recognition to automatically:
1. Identify ISO containers code and hazardous goods label
 2. Read truck and trailer license plate
 3. Capture images and videos for damage control



MONTECON: OPERATIONAL PROJECTS



Container yard expansion and RTG acquisition

The project includes a reconfiguration and expansion of the container yard and the acquisition of an electric RTG. These improvements will:

Increase yard capacity in approximately 1.400 TEU

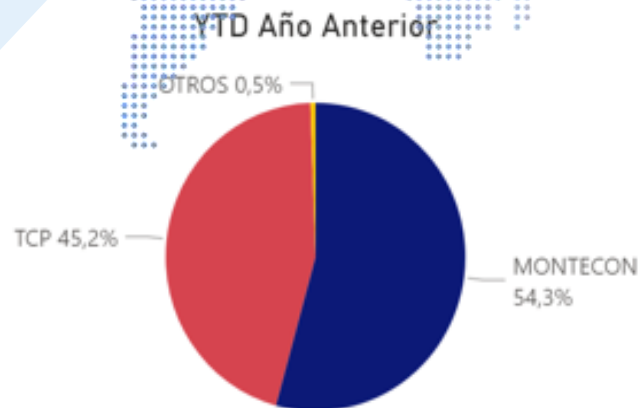
1. Provide 360 reefer plugs (max. 720 plugs)
2. Save about 80% of the energy costs (electric 3. RTG vs. diesel RTG)



MONTECON LAST TERMINAL IMPROVEMENTS

- **New RTG**– New RTG'S for the new area to improve yard capacity.
- **New Platforms** – New reefer platforms for the new area to improve reefer service and reduce time spent unplugged
- **Twin Lift Full units** – Acquisition of new twin lift spreaders in order to manipulate full 2x20 units
- **Double Cycle** – Double cycle crane move with Navis module which permit all shore-vessel-shore move always with boxes under spreader
- **NEW CRANE** - Montecon is negotiating to acquier a new crane
- **REEFER PLATFORMS** – On March 2019 Montecon already get new area for reefer stacking
- **NEW AREAS** – Will add 1400+800 teus of capacity & 360+440 reefer plugs and platforms
- **REEFER MONITORING** – for perishable cargoes.

TERMINAL THROUGHPUT & MARKET SHARE 2021



MVD PORT

● Boxes

CONTENEDORES MOVILIZADOS -MVD acumulado YTD (Boxes)

Año	MONTECON	TCP	OTROS	Total
2020	275.118	184.992	2.512	462.622
2021	287.044	283.278	3.064	573.386

TERMINAL CUSTOMERS & CONNECTIVITY

2022



Weekly services

- FAR EAST (FESA): Cosco, CMA-CGM, Evergreen, Yang Ming, PIL.
- FAR EAST-INDIA-LATIN AMERICA: Hyundai.
- NORTH EUROPE (NWC): MSC, Hapag Lloyd.



Forthnightly

MERCOSUR (PLATA SVCE): CMA-CGM.



Waterway connections

Waterway connections to Paraguay, Bolivia & Argentina

MONTECON FIGURES



Figures based on 2021



287.044
Boxes moved



214 calls Ocean vessels
421 calls Feeder vessels
54 calls Project, ro-ro



800.000
RS/RTG's Receptions/deliveries



+ 2.500
hours OHS training

MONTECON: PERSONNEL/COACHING

QUANTITY

210

380

YEAR

2010

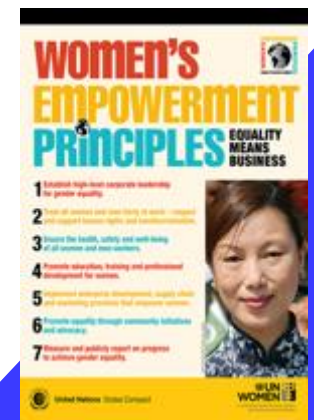
2020



Training to Montecon & Subcontractors personnel OHSAS 18.001 certification & ISO 14.001



1st Female crane driver in Southamerica



ISO 14001



AEO



ISPS CODE



OHSAS 18001



Montecon is operating on public areas.

- Own ISPS certification.
- Surveillance 24x7.
- CCTV.
- Authorized economic operator (AEO)

SUMMARY: COMMERCIAL BENEFITS AT MCN

- Largest stacking window, allowing to get more cargoes and big export parcels (rice, soya, saw timber, wood etc.)
- Preferential Export & Import Terminal costs.
- Extended hours for Export reception & Import delivery at Terminal.
- Synergy between trades and good connectivity.
- Teamwork & good relationship with main stakeholders.
- Daily contact with exporters, importers, freight forwarders, Nvocc's etc.
- Local agent/Lines & Montecon, supporting on daily businesses.
- Local touch & quick replies – Management located / decisions at MVD
- Montecon hi-tech profile (i.e. Web site, APP, Blockchain etc.)
- Commercial flexibility.
- One process by segment (i.e. Pharma, Chilled cargoes



COMMERCIAL SUPPLY CHAIN & LOGISTICS

SUPPLY CHAIN & LOGISTICS

- Local solutions and integrated support on transport and warehousing at Mdeo.
- Warehousing and Distribution.
- Cold Chain Solution at Port of Montevideo. Special conditions and services.



